



ScriptSave®  
WellRx

# Prescription Savings Card

## Welcome to ScriptSave® WellRx

We are pleased to provide you with the ScriptSave WellRx Prescription Savings Card. ScriptSave WellRx can provide instant savings at the register on brand-name and generic prescriptions. Use the card to save on medications for the entire family –including your pets.

We're accepted nationwide at over 65,000 pharmacies. Show your savings card. Receive your discount:

- No enrollment fee and no limits on usage
- Everyone in your household can use the same card
- Savings average 65%, and, in some cases, can be 80% or more\*!
- Accepted at more than 65,000 pharmacies nationwide
- All prescription medications are eligible for savings



ID # MSC53773627

Group # 8602

RxBin 006053

RxPCN MSC

Pharmacy Help Desk (pharmacist only) **1-800-404-1031**

Customer Care **1-800-407-8156**

Visit [www.wellrx.com/](http://www.wellrx.com/) for more information and discounts on other services.

**DISCOUNT ONLY - NOT INSURANCE**

Administered by Medical Security Card Company, LLC of Tucson, AZ

## START SAVING TODAY... IT'S EASY!



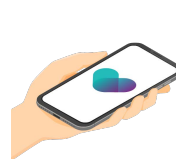
### Print this page

Cut out your card and fold it in half to fit in your wallet.



### Find the lowest price

On your medications at the nearest participating pharmacy by visiting [wellrx.com](http://wellrx.com).



### Show your card

Take your card along with your prescriptions and present them to the pharmacist.



### Check Out

Pay the discounted price and enjoy your instant savings!

## Questions? Contact us:

[www.wellrx.com/](http://www.wellrx.com/)

**1-800-407-8156**

**DISCOUNT ONLY - NOT INSURANCE.** Discounts are available exclusively through participating pharmacies. The range of the discounts will vary depending on the type of prescription and the pharmacy chosen. This program does not make payments directly to pharmacies. Members are required to pay for all prescription purchases. Cannot be used in conjunction with insurance. You may contact customer care anytime with questions or concerns, to cancel your registration, or to obtain further information. This program is administered by Medical Security Card Company, LLC, Tucson, AZ. \*Average and up to savings percentages are based on all discounted prescriptions that were run through the WellRx program in 2022. Discount percentages represent savings provided off of pharmacies' retail prices for consumers who do not have a discount program and pay cash.